

# My Password Changed! Now What? - A Tip Sheet

Once every 120 days, your Novell password will expire. When it does, you'll have a multitude of places where you will have to physically change it and others where you won't. Below is a lists those locations:

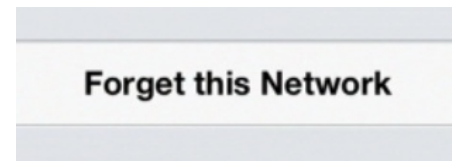
You WILL have to physically change your password on:

## iPad, iPod, or iPhone

### EPAWN - wireless (in settings)

You should be prompted to enter your new password, however if that doesn't work, follow these steps.

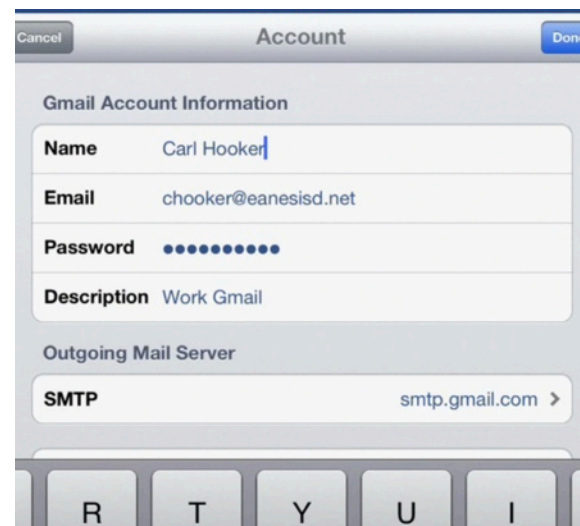
1. Go to settings
2. Click on the blue arrow next to EPAWN
3. Click on "Forget this Network"
4. Go back to your list of wireless choices and click on the word EPAWN
5. Enter your Novell credentials and then click on "Accept Certificate" and you'll be connected.



### Google Mail - (in settings)

1. Click on Mail, Contacts, Calendars
2. Click on your School email
3. Click on Account
4. In this window, delete and change your password.

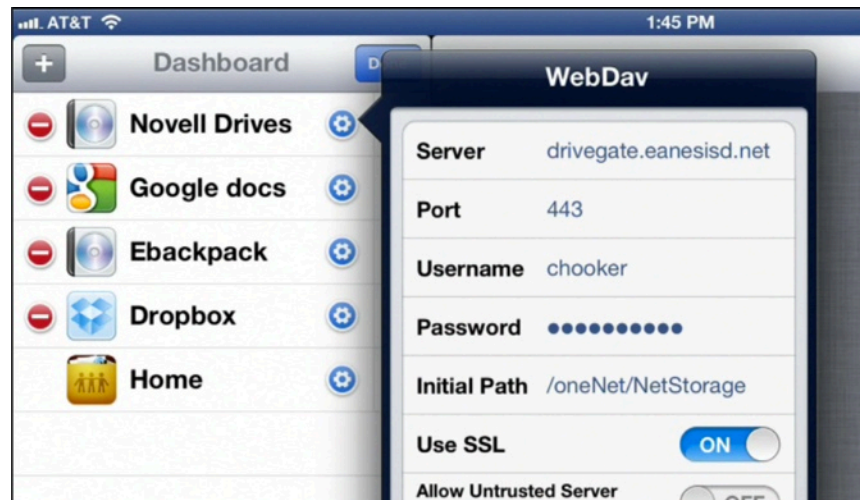
Do the same thing for your Exchange Contacts



## iFilesHD (formerly WebdavNav)

This is your Home Folder and access to the Novell drives.

If you synced your Google Docs, eBackPack and Novell home folder here, you'll have to click on Edit then on the little blue gear. Enter your new password on each account.

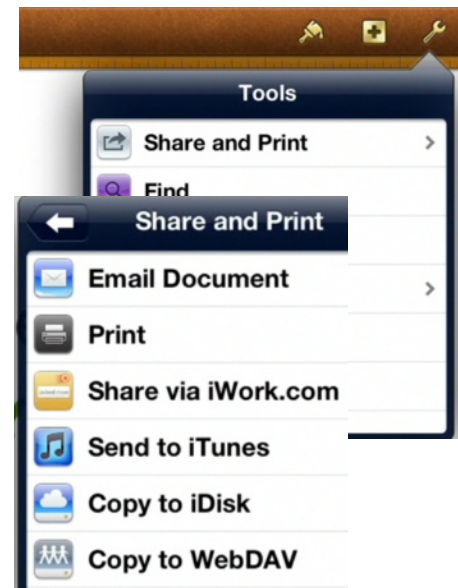


## Pages, Keynote, Numbers

These programs and some others use WebDav to share out files. When you password changes, you'll need to go in and change these as well. Open a file and click on the wrench in the upper-right corner. More than likely you'll get an alert when you try to "Copy to WebDav" out of these. If you don't, sign out and re-enter your information.

Remember the Server URL is:

**<https://drivegate.eanesisd.net/oneNet/NetStorage>**



## Places you WON'T have to change your password:

Eduphoria (automatically changes)

Gmail (via an internet browser on a computer) - automatically changes

eBackpack (via an internet browser on a computer) - automatically changes

**NOTE: We have no association or control of your iTunes or Apple ID as these are managed solely by you through Apple.**